



PATON JAMIESON
PRESTIGE PROPERTY



THE GLEDSWOOD

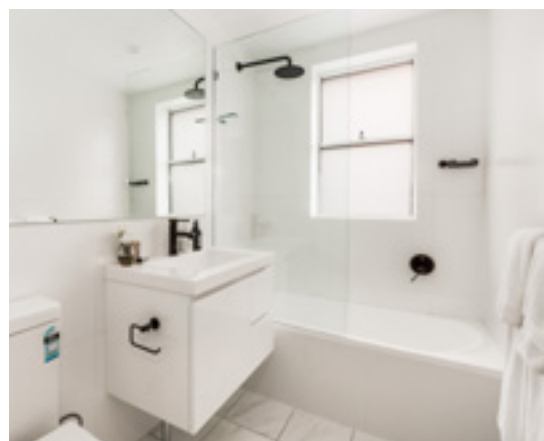
A CONTEMPORARY TRANSFORMATION OF AN ART DECO CLASSIC

The Gledswood is a boutique building comprising of 1 and 2 bedroom apartments. Located in a quiet residential street just moments from the thriving Bondi Junction shopping precinct, train station, bus interchange and world famous Bondi Beach.

15 BOTANY STREET,
BONDI JUNCTION

THIS COULD BE YOURS

- ◆ Gourmet kitchens boasting Corian benchtops
- ◆ Stainless steel Bosch appliances
- ◆ Striking bathrooms with matte black fittings
- ◆ Generous full height custom wardrobes
- ◆ Internal laundry facilities
- ◆ Stunning arrival foyer with chandeliers, wall sconces and terrazzo flooring
- ◆ A pet and cyclist friendly community



1 BEDROOM

\$749,000 TO \$779,000

1 BEDROOM



\$849,000

2 BEDROOM



\$979,000 TO \$1,099,000

COUNCIL RATES

\$186.00

PER QUARTER APPROX

WATER RATES

\$278.00

PER QUARTER APPROX

1BR STRATA LEVIES

\$564.09 - \$775.63

PER QUARTER APPROX

2BR STRATA LEVIES

\$775.63 - \$854.96

PER QUARTER APPROX

Paton Jamieson

M 0416 246 969 **P** 02 9660 8980 **F** 02 9571 8580

Suite 5.15, 55 Miller Street, Pyrmont NSW 2009

patonjamieson.com.au

*Mr Donald
for Value*